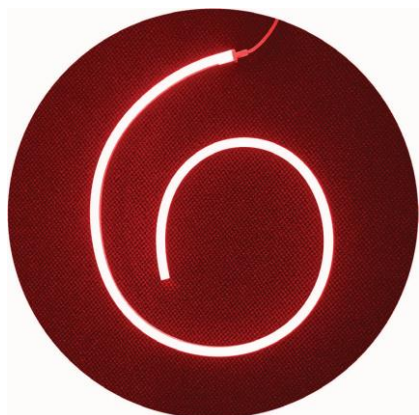


TECHNICAL INFORMATION

AW5002GS Genieflex 918 Small



Application Descriptions:

- Surface Mounted, Fixed
- Internal and External Applications
- Side Bending Linear Lighting Applications, Signage Tracing, Lining, Soffit or Alcoves, Cabinetry Applications

Product Name	GENIE FLEX 918 SMALL
Description	Flexible Neon with Full Colour and Animated Range, Side Lit, for Small Signage App., Slimline, Flat Diffuser, Seamless and Non Dotting, Corrosion/Solvents/Flame/UV Resistant, LED Ribbon
Material	Flexible PVC Body, Injection Moulded Caps and Connectors, Aluminium/Plastic Locking Clip/Channel, UV Resistant Spray Coating
Dimensions	Width: 9mm Height:18mm (Allowance for Clip: 12mm Width)
LED Details	5 Watts/m Epistar or Nichia SMD, Beam Angle: 160°, 10-120 lm/m
Driver	Remote Driver
IP Rating	68
IK Rating	08
Installation	Surface Mounted

We reserve the right to make technical changes.

Should you have any enquiries, please consult an Actwell representative. Email: sales@actwelllighting.com.au
 34 Mary Parade | Rydalmere NSW 2116 | Australia | T +61 2 9638 3333 | www.actwelllighting.com

TECHNICAL INFORMATION

Order Code:

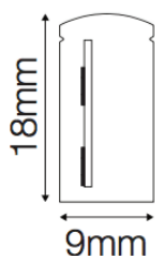
AW5002GS-(Lighting Colour)- (Beam Angle)-(Length)-(Dimming)

Example: AW5002GS-Blue-160°-2.5-ND

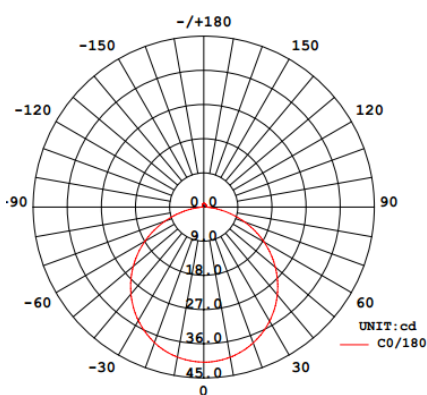
Options:

Lighting Colour	Beam Angle	Length	Dimming
Warm	160°	Custom	ND (Non-Dim)
Cool		Min. 100mm	DD (Dali)
Daylight			DM (DMX)
Red			DS (DSI)
Green			
Blue			
Yellow			
Orange			

Dimensions Line Diagram:



Photometrics:



We reserve the right to make technical changes.

Should you have any enquiries, please consult an Actwell representative. Email: sales@actwelllighting.com.au

34 Mary Parade | Rydalmere NSW 2116 | Australia | T +61 2 9638 3333 | www.actwelllighting.com

TECHNICAL INFORMATION

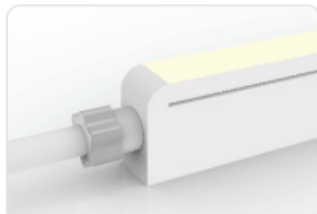
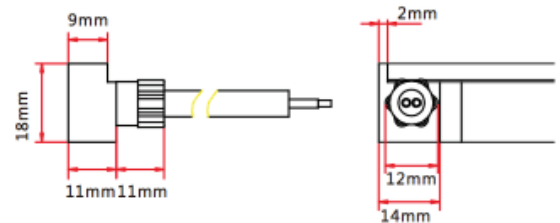
Features and Options:

Cable Entry Options:



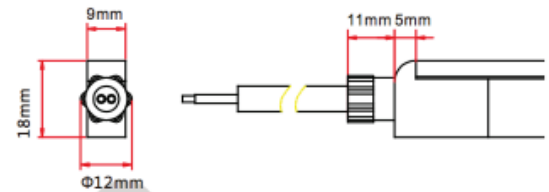
Injection-moulded Front Connector (side)

Connects light to power supply with pre-installed side feed cable, IP68. Cable length available in 0.3m, 1m, 3m, 5m, 10m, 15m, 20m.



Injection-moulded Front Connector (top end)

Connects light to power supply with pre-installed end feed cable, IP68. Cable length available in 0.3m, 1m, 3m, 5m, 10m, 15m, 20m.



Mounting Clips:



500mm or 1000mm Lengths



Individual Clips



Flame Resistant



UV Resistant



Solvents Resistant



Saltwater Resistant



IP68 Protection



IK08 Protection



5 year Warranty



3 year Warranty

We reserve the right to make technical changes.

Should you have any enquiries, please consult an Actwell representative. Email: sales@actwelllighting.com.au

34 Mary Parade | Rydalmere NSW 2116 | Australia | T +61 2 9638 3333 | www.actwelllighting.com