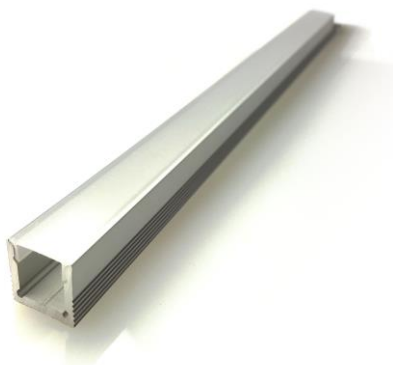


TECHNICAL INFORMATION

AWS0709MTFT Finn



Surface Mounted
Fixed

Application Descriptions:

- Surface Mounted, Fixed
- Internal Applications
- Ambient Linear Lighting – Kitchens and Bathrooms Cabinetry, Retail Display Cabinetry, Ceiling Soffits, Hospitality Linear Backlighting Applications, Under Handrails, Step Treads Linear Lighting

Product Name	FINN
Description	Thinnest Linear Extrusion for Cabinetry or Handrails, Utilising SMD LED Tape, Frosted Acrylic Diffuser, 12V, Available with Aluminium Mounting Clips, Custom Cut to Length
Material	Extruded Pure Aluminium Channel, Frosted Acrylic Diffuser, Aluminium Mounting Clips
Dimensions	Width: 8mm; Height: 10mm; Cut Out: 11 x 10mm
LED Details	9.6W/m Epistar SMD5050, 3000K or 4000K available, Beam Angle: 120°, 800lm/m
Driver	Remote Driver
IP Rating	IP44
IK Rating	IK04
Installation	Surface Mounted

We reserve the right to make technical changes.

Should you have any enquiries, please consult an Actwell representative. Email: sales@actwelllighting.com.au
34 Mary Parade | Rydalmere NSW 2116 | Australia | T +61 2 9638 3333 | www.actwelllighting.com

TECHNICAL INFORMATION

Order Code:

AWS0709MTFT-(Colour Finish)-(Temperature)-(Beam Angle)-(Length)-(Dimming)

Example: AWS0709MTFT-AL-3K-120°-0.5-ND

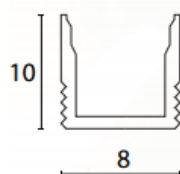
Options:

Colour Finish	Temperature	Beam Angle	Length	Dimming
AL (Aluminium)	3K (3000K)	120	0.5m	ND (Non-Dim)
	4K (4000K)		1m	
			1.5m	
			2.0m	
			Custom	

Dimensions Line Diagram:

*Custom cut length

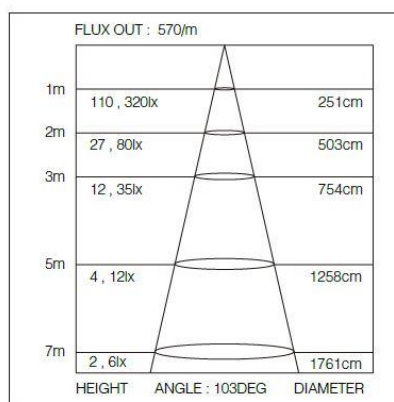
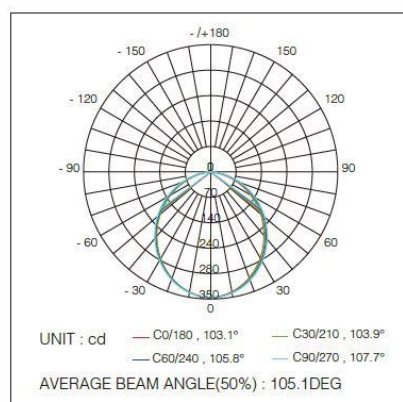
Cross section



11 x 10
Recessed

With Mounting Clip Allow Height: 11mm, Width: 10mm

Photometrics:



We reserve the right to make technical changes.

Should you have any enquiries, please consult an Actwell representative. Email: sales@actwelllighting.com.au

34 Mary Parade | Rydalmere NSW 2116 | Australia | T +61 2 9638 3333 | www.actwelllighting.com

TECHNICAL INFORMATION

Parts:



End cap x 4



Mounting clip x 8