

TECHNICAL INFORMATION

AW5005GL Genieflex 1129 Large



Application Descriptions:

- Surface Mounted, Fixed
- Internal and External Areas, Linear Lighting Applications
- Side Bending Linear Lighting Applications, Landscaping, Exterior Building Façades, Underwater Applications, Soffit or Alcoves, Cabinetry, Ceiling Recessed, Under seating, Inground Around Walls and Sculptural Applications

Product Name	GENIE FLEX 1129 LARGE
Description	Flexible Neon with Full Colour and Animated Range, Side Lit, for Small Signage App., Slimline, Flat Diffuser, Seamless and Non Dotting, Corrosion/Solvents/Flame/UV Resistant, LED Ribbon
Material	Flexible PVC Body, Injection Moulded Caps and Connectors, Aluminium/Plastic Locking Clip/Channel, UV Resistant Spray Coating
Dimensions	Width: 11mm Height: 29mm (Allowance for Clip: 15mm Width, 33mm Height)
LED Details	12 Watts/m Epistar or Nichia SMD, Beam Angle: 270°, 50-450 lm/m
Driver	Remote Driver
IP Rating	68
IK Rating	08
Installation	Surface Mounted

We reserve the right to make technical changes.

Should you have any enquiries, please consult an Actwell representative. Email: sales@actwelllighting.com.au
34 Mary Parade | Rydalmere NSW 2116 | Australia | T +61 2 9638 3333 | www.actwelllighting.com

TECHNICAL INFORMATION

Order Code:

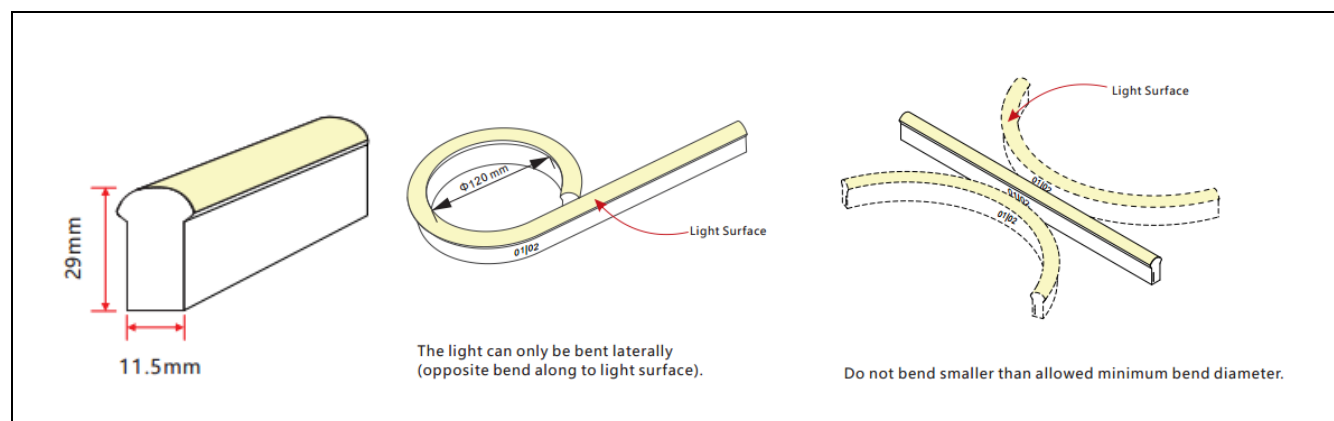
AW5005GL-(Lighting Colour)-(Beam Angle)-(Length)-(Dimming)

Example: AW5005GL-Blue-270°-2550-ND

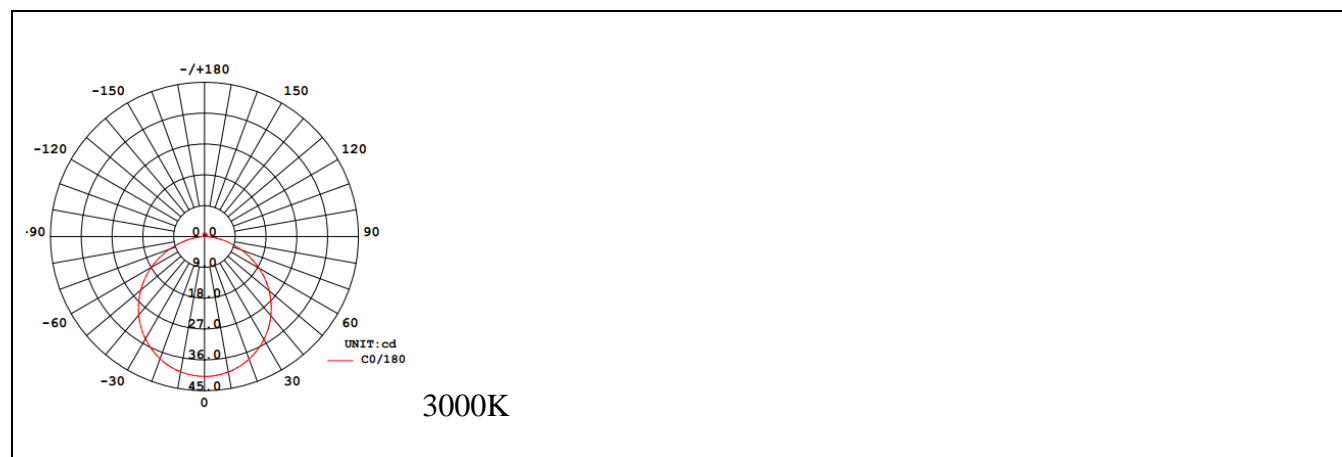
Options:

Lighting Colour(1)	Lighting Colour (2)	Beam Angle	Length	Dimming
Warm	RGB	270°	Custom	ND (Non-Dim)
Cool	RGB Animated		(per 100mm)	DD (DALI)
Daylight				DM (DMX)
Red				DS (DSI)
Green				11 (1-10V)
Blue				
Yellow				
Orange				

Dimensions Line Diagram:



Photometrics:



We reserve the right to make technical changes.

Should you have any enquiries, please consult an Actwell representative. Email: sales@actwelllighting.com.au

34 Mary Parade | Rydalmere NSW 2116 | Australia | T +61 2 9638 3333 | www.actwelllighting.com

TECHNICAL INFORMATION

Features and Options:

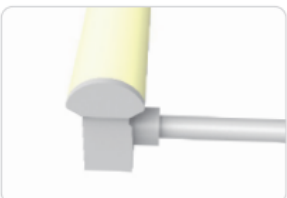
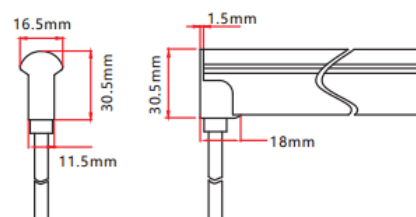
Cable Entry Options:

Injection-moulded Connector



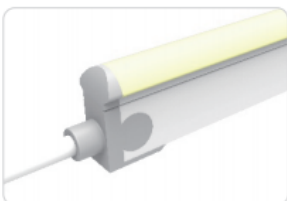
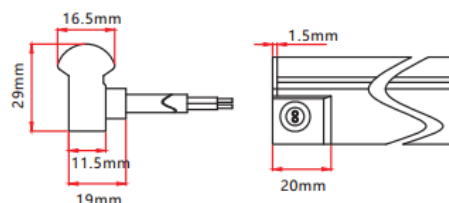
Injection-moulded Front Connector (bottom)

Connects light to power supply with pre-installed bottom feed cable, IP68. Cable length available in 0.3m, 1m, 3m, 5m, 10m, 15m, 20m.



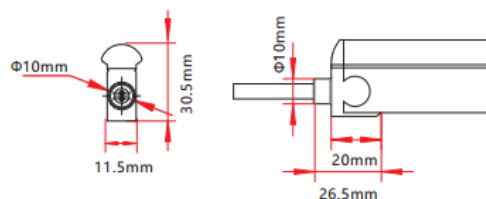
Injection-moulded Front Connector (side)

Connects light to power supply with pre-installed side feed cable, IP68. Cable length available in 0.3m, 1m, 3m, 5m, 10m, 15m, 20m.



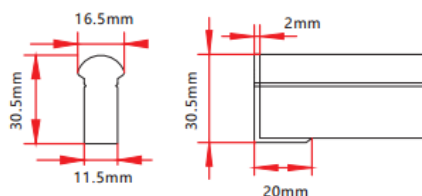
Injection-moulded Front Connector (top end)

Connects light to power supply with pre-installed end feed cable, IP68. Cable length available in 0.3m, 1m, 3m, 5m, 10m, 15m, 20m.



Injection-moulded End Cap

Pre-installed termination protection of the light, IP68.



TECHNICAL INFORMATION

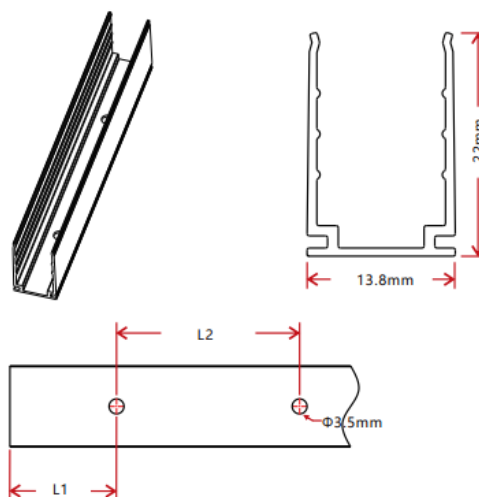
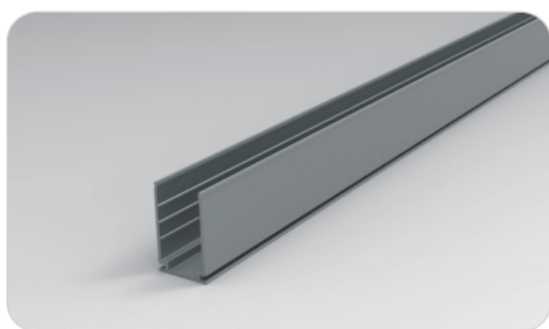
Mounting Clips:



500mm or 1000mm Lengths



Individual Clips



Model	W*H(mm)	Standard Length (L:mm)	L1 (mm)	L2 (mm)	Screw Hole (Φ:mm)	Hole Number
AW5005GL	13.8*22	30	15	/	Φ3.5	1
		50	25	/	Φ3.5	1
		500	50	290	Φ3.5	3
		1000	100	200	Φ3.5	5
		2000	100	200	Φ3.5	10



Flame
Resistant



UV
Resistant



Solvents
Resistant



Saltwater
Resistant



IP68
Protection



IK08
Protection



5 year
Warranty



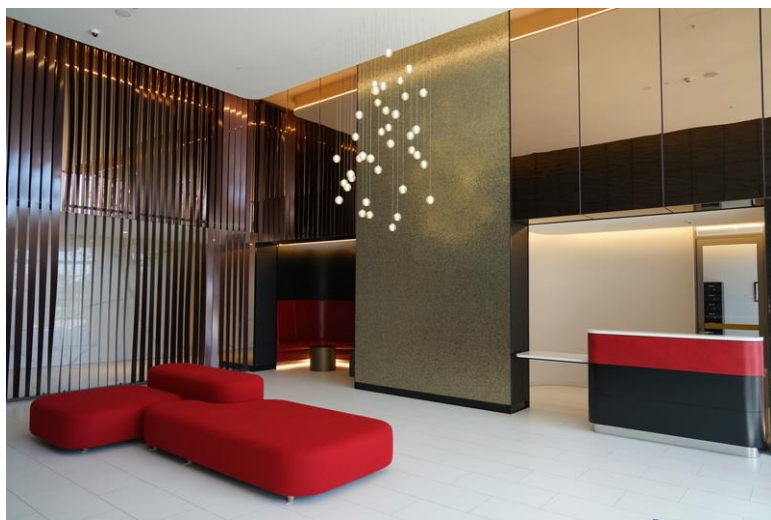
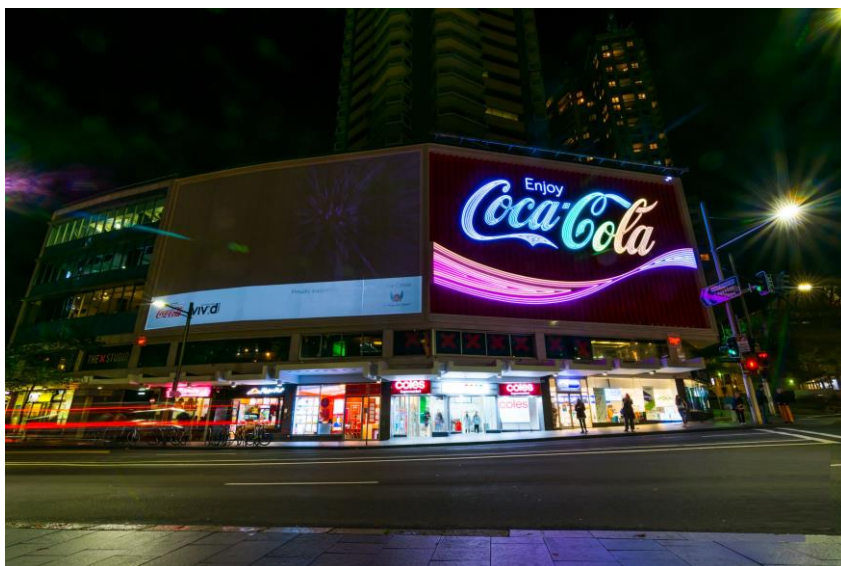
3 year
Warranty

We reserve the right to make technical changes.

Should you have any enquiries, please consult an Actwell representative. Email: sales@actwelllighting.com.au
34 Mary Parade | Rydalmere NSW 2116 | Australia | T +61 2 9638 3333 | www.actwelllighting.com

TECHNICAL INFORMATION

Product Application Photos:



We reserve the right to make technical changes.

Should you have any enquiries, please consult an Actwell representative. Email: sales@actwelllighting.com.au

34 Mary Parade | Rydalmere NSW 2116 | Australia | T +61 2 9638 3333 | www.actwelllighting.com