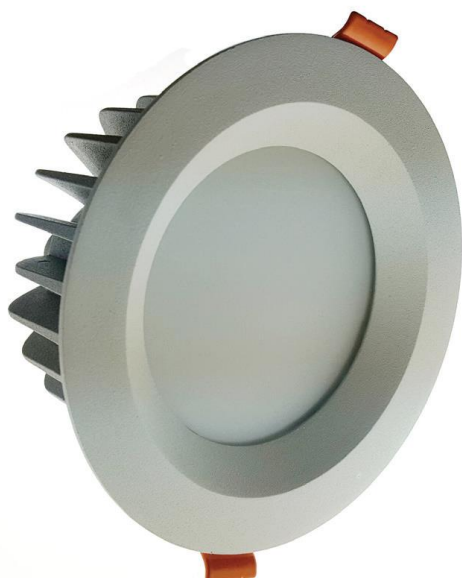


## TECHNICAL INFORMATION

### AW6605RD Winter 60



Recessed  
Fixed



#### Application Descriptions:

- Recessed, Fixed
- Interior, Exterior and Wet Area Locations, High Ceiling Height Areas, Wide Coverage
- Corridors, Commercial Offices, Retail Stores, Food Service Areas, Hospitals, Shopping and Sport Centres, Airports, Exterior Awnings

|              |  |
|--------------|--|
| Product Name | <b>WINTER 60</b>   |
| Description  | IP55 Weatherproof, Wide Beam, Low Profile, Fixed, Recessed LED Downlight, Superior SDCM Rating < 3 |
| Material     | Powdercoated Aluminium Trim and Body, Frosted Polycarbonate Diffuser, Silicon Rubber Gasket        |
| Dimensions   | Diameter: 240mm; Height: 116mm; Cut Out: 200mm   |
| LED Details  | 60W Epistar COB, 3000K or 4000K available, CRI: 80, Beam Angle: 90°, 5500lm                        |
| Driver       | 1400mA LED Driver  |
| IP Rating    | IP55   |
| IK Rating    | IK04   |
| Installation | Recessed   |

We reserve the right to make technical changes.

Should you have any enquiries, please consult an Actwell representative. Email: [sales@actwelllighting.com.au](mailto:sales@actwelllighting.com.au)  
34 Mary Parade | Rydalmere NSW 2116 | Australia | T +61 2 9638 3333 | [www.actwelllighting.com](http://www.actwelllighting.com)

## TECHNICAL INFORMATION

### Order Code:

**AW6605RD-(Colour Finish)-(Temperature)-(Beam Angle)-(Dimming)**

**Example: AW6605RD-WH-3K-90°-ND**

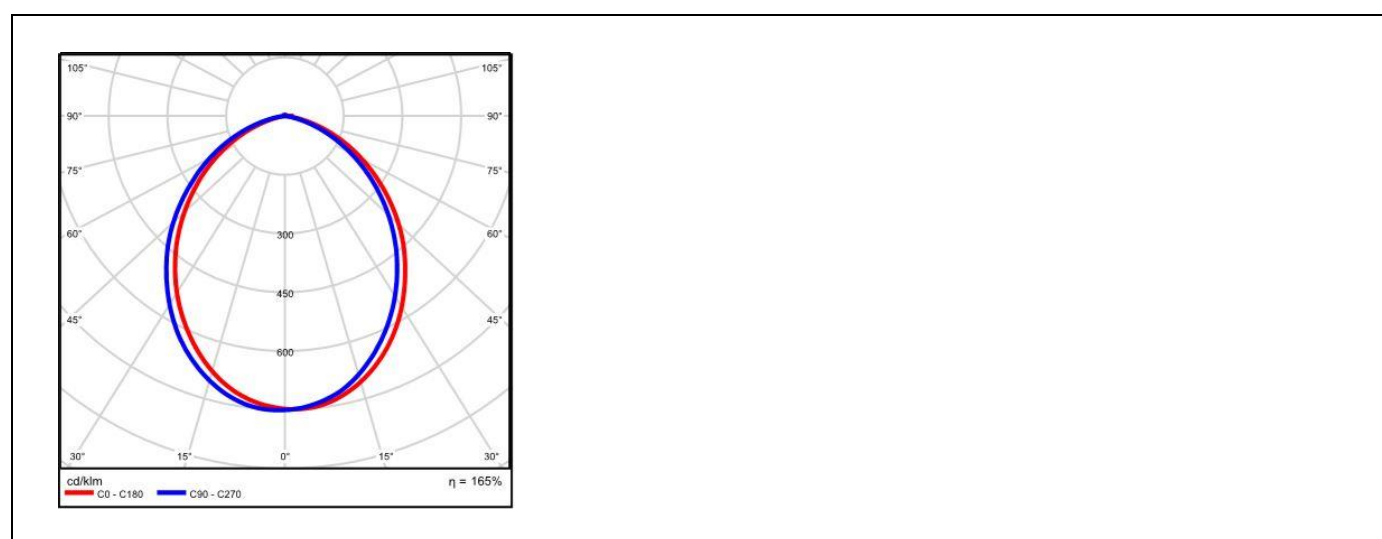
### Options:

| Colour Finish     | Temperature       | Beam Angle | Dimming             |
|-------------------|-------------------|------------|---------------------|
| <b>WH</b> (White) | <b>3K</b> (3000K) | <b>90°</b> | <b>ND</b> (Non-Dim) |
|                   | <b>4K</b> (4000K) |            | <b>PH</b> (Phase)   |
|                   |                   |            | <b>11</b> (1-10v)   |
|                   |                   |            | <b>DD</b> (Dali)    |

### Dimensions Line Diagram:



### Photometrics:



We reserve the right to make technical changes.

Should you have any enquiries, please consult an Actwell representative. Email: [sales@actwelllighting.com.au](mailto:sales@actwelllighting.com.au)

34 Mary Parade | Rydalmere NSW 2116 | Australia | T +61 2 9638 3333 | [www.actwelllighting.com](http://www.actwelllighting.com)