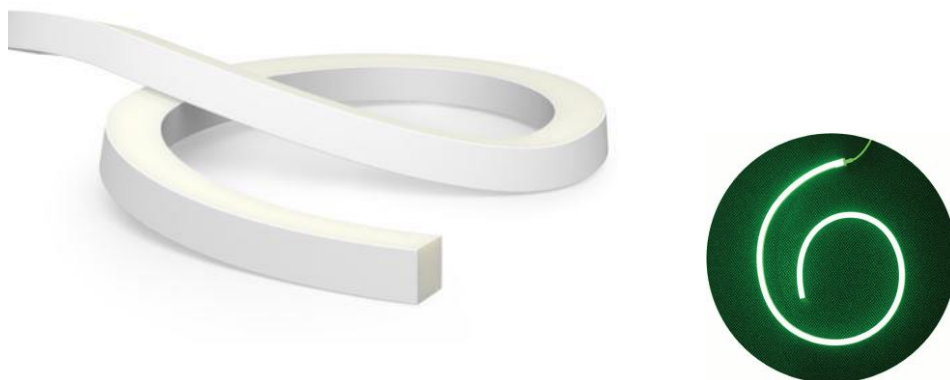


TECHNICAL INFORMATION

AW5003GM Genieflex 1121 Medium



Application Descriptions:

- Surface Mounted, Fixed
- Internal and External Applications
- Side Bending Medium Scale Linear Lighting Applications, Landscaping, Exterior Building Façades, Underwater Applications, Soffit or Alcoves, Cabinetry, Ceiling Recessed, Under seating, Inground Around Walls and Sculptural Applications

Product Name	GENIE FLEX 1121 MEDIUM
Description	Flexible Neon with Full Colour and Animated Range, Side Lit, for Small Signage App., Slimline, Flat Diffuser, Seamless and Non Dotting, Corrosion/Solvents/Flame/UV Resistant, LED Ribbon
Material	Flexible PVC Body, Injection Moulded Caps and Connectors, Aluminium/Plastic Locking Clip/Channel, UV Resistant Spray Coating
Dimensions	Width: 11mm Height:21mm (Allowance for Clip: 15mm Width, 24mm Height)
LED Details	12 Watts/m Epistar or Nichia SMD, Beam Angle: 160°, 50-450 lm/m
Driver	Remote Driver
IP Rating	68
IK Rating	08
Installation	Surface Mounted

We reserve the right to make technical changes.

Should you have any enquiries, please consult an Actwell representative. Email: sales@actwelllighting.com.au
34 Mary Parade | Rydalmere NSW 2116 | Australia | T +61 2 9638 3333 | www.actwelllighting.com

TECHNICAL INFORMATION

Order Code:

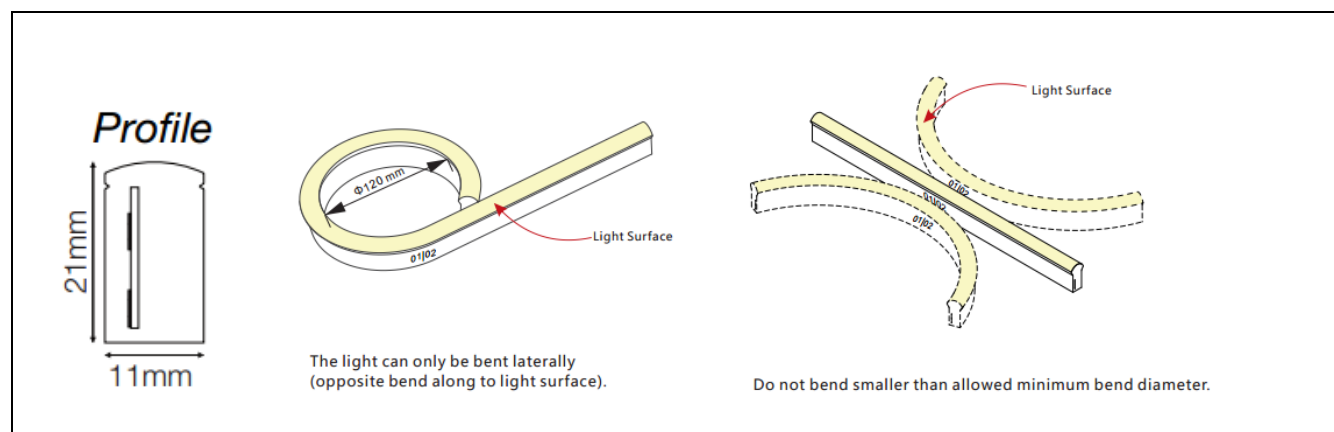
AW5003GM-(Lighting Colour)- (Length)-(Cable Input)-(Dimming)

Example: AW5003GM-Red-160°-2550-ND

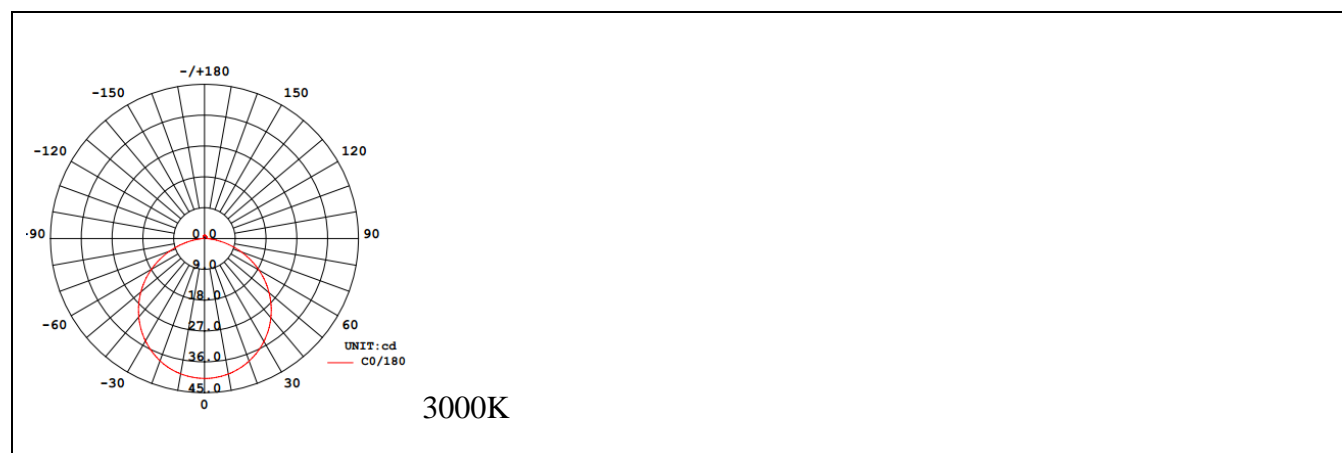
Options:

Lighting Colour(1)	Lighting Colour (2)	Beam Angle	Length	Dimming
Warm	RGB	160°	Custom	ND (Non-Dim)
Cool	RGB Animated		(per 83.3mm)	DD (DALI)
Daylight				DM (DMX)
Red				DS (DSI)
Green				11 (1-10V)
Blue				
Yellow				
Orange				

Dimensions Line Diagram:



Photometrics:



We reserve the right to make technical changes.

Should you have any enquiries, please consult an Actwell representative. Email: sales@actwelllighting.com.au

34 Mary Parade | Rydalmere NSW 2116 | Australia | T +61 2 9638 3333 | www.actwelllighting.com

TECHNICAL INFORMATION

Features and Options:

Cable Entry Options:

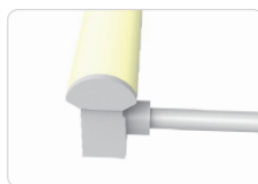
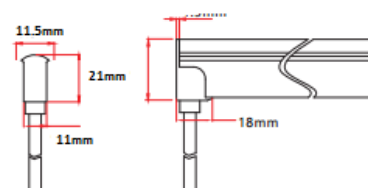
3. Types of Connector

3.1 Injection-moulded Connector



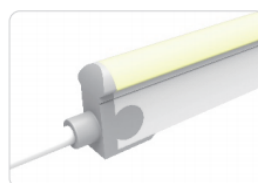
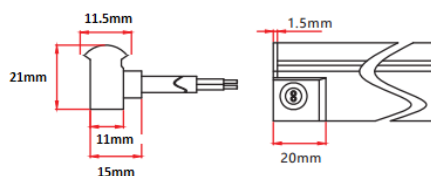
Injection-moulded Front Connector (bottom)

Connects light to power supply with pre-installed bottom feed cable, IP68. Cable length available in 0.3m, 1m, 3m, 5m, 10m, 15m, 20m.



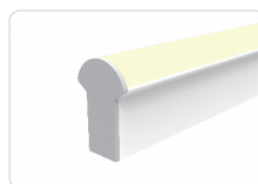
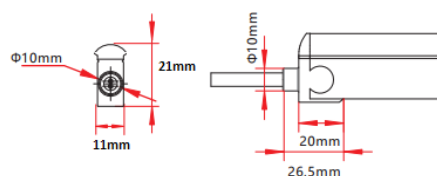
Injection-moulded Front Connector (side)

Connects light to power supply with pre-installed side feed cable, IP68. Cable length available in 0.3m, 1m, 3m, 5m, 10m, 15m, 20m.



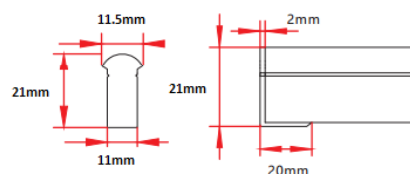
Injection-moulded Front Connector (top end)

Connects light to power supply with pre-installed end feed cable, IP68. Cable length available in 0.3m, 1m, 3m, 5m, 10m, 15m, 20m.



Injection-moulded End Cap

Pre-installed termination protection of the light, IP68.



TECHNICAL INFORMATION

Mounting Clips:

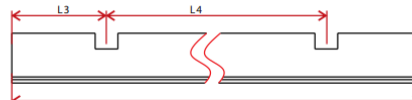
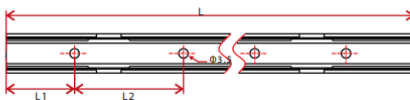
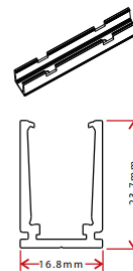
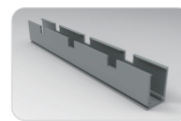
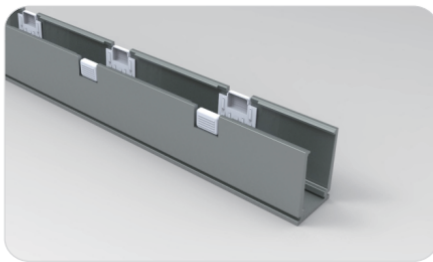


500mm or 1000mm Lengths



Individual Clips

Locking Channel Specifications



Model	W*H(mm)	Standard Length(L : mm)	L1(mm)	L2(mm)	L3(mm)	L4(mm)	Hole Spacing(Φ mm)	Hole Number	Clip Number
FR004	16.8*23.7	35	17.5	/	17.5	/	Φ3.5	1	1
		50	25	/	25	/	Φ3.5	1	1
		500	100	300	150	200	Φ3.5	2	2
		1000	100	200	150	350	Φ3.5	5	3
		2000	100	200	125	350	Φ3.5	10	6



Flame
Resistant



UV
Resistant



Solvents
Resistant



Saltwater
Resistant



IP68
Protection



IK08
Protection



5 year
Warranty



3 year
Warranty

We reserve the right to make technical changes.

Should you have any enquiries, please consult an Actwell representative. Email: sales@actwelllighting.com.au

34 Mary Parade | Rydalmere NSW 2116 | Australia | T +61 2 9638 3333 | www.actwelllighting.com

TECHNICAL INFORMATION

Product Application Photos:

