

## TECHNICAL INFORMATION

### AW682RD Onyx 82



Recessed  
Fixed

#### Application Descriptions:

- Recessed, Fixed
- Interior and Exterior Locations, High Ceiling and Low Glare Applications
- High Ceiling Entry Lobbies, Shopping Centres, Sport Centres, Stadiums, Concert Halls, Airports

Product Name	<b>ONYX 82</b>
Description	High Powered, Anti Dazzle Glare Control Reflector, IP65 Water and Dust Protected, Fixed, Recessed LED Downlight
Material	Die Cast Aluminium Trim and Body, Patented Semi-Frosted PC Lens Diffuser, Removable Anti-Glare Reflector, Internal Parabolic Reflector, Water Proof Capping and Silicon Rubber Ring
Dimensions	Diameter: 225mm; Height: 195mm; Cut Out: 200mm
LED Details	82W Bridgelux or Luminus COB LED, 3000K, 4000K, 5000K, 6000K available, CRI: 85, Beam Angle: 18°, 30°, 50°, 7400lm
Driver	2100mA LED Driver
IP Rating	IP65
IK Rating	IK04
Installation	Recessed

We reserve the right to make technical changes.

Should you have any enquiries, please consult an Actwell representative. Email: [sales@actwellighting.com.au](mailto:sales@actwellighting.com.au)  
34 Mary Parade | Rydalmere NSW 2116 | Australia | T +61 2 9638 3333 | [www.actwellighting.com](http://www.actwellighting.com)

## TECHNICAL INFORMATION

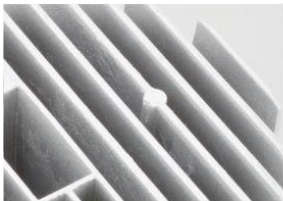
### Order Code:

AW682-(Colour Finish)-(Temperature)-(CRI)-(Beam Angle)-(Dimming)

Example: AW682-WH-3K-C8-18°-ND

### Options:

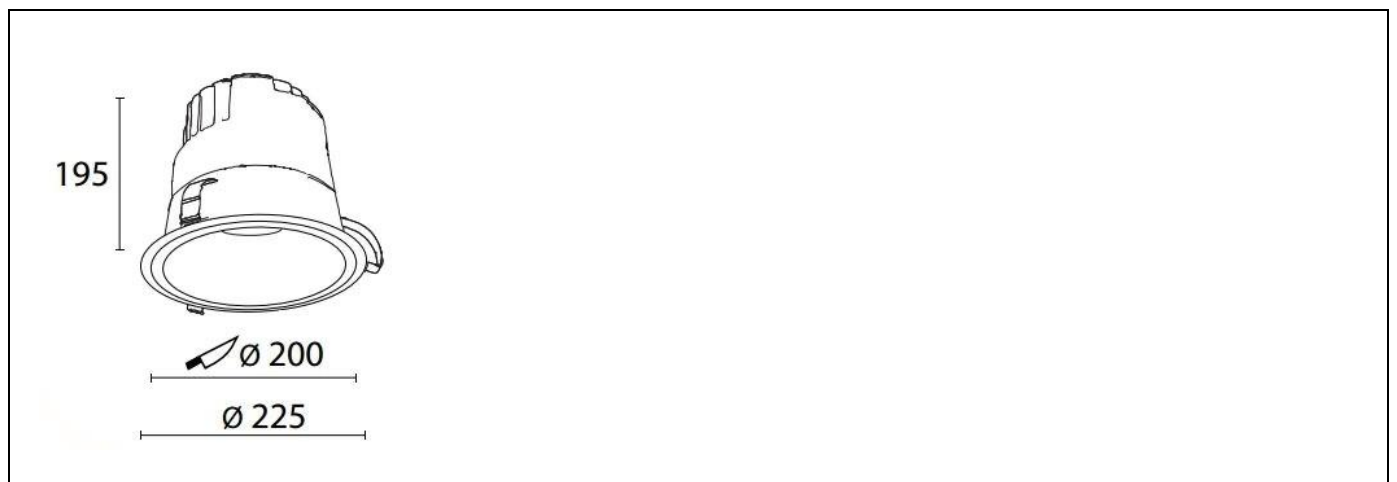
Colour Finish	Temperature	CRI	Beam Angle	Dimming
WH (White)	3K (3000K)	C8(80)	18°	ND (Non-Dim)
BK (Black)	4K (4000K)	C9(90)	30°	PH (Phase)
GR (Grey)	5K (5000K)		50°	11 (1-10V)
	6K (6000K)			DD (DALI)



Thermally engineered heat-sink creates highly efficient passive cooling system



### Dimensions Line Diagram:



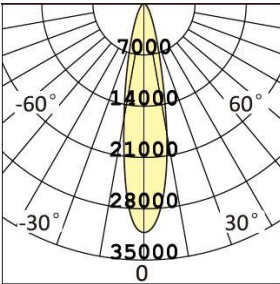
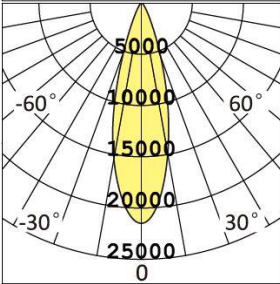
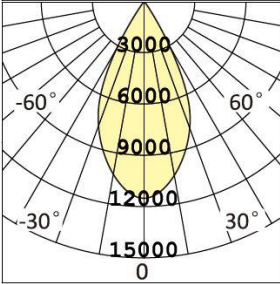
We reserve the right to make technical changes.

Should you have any enquiries, please consult an Actwell representative. Email: [sales@actwelllighting.com.au](mailto:sales@actwelllighting.com.au)

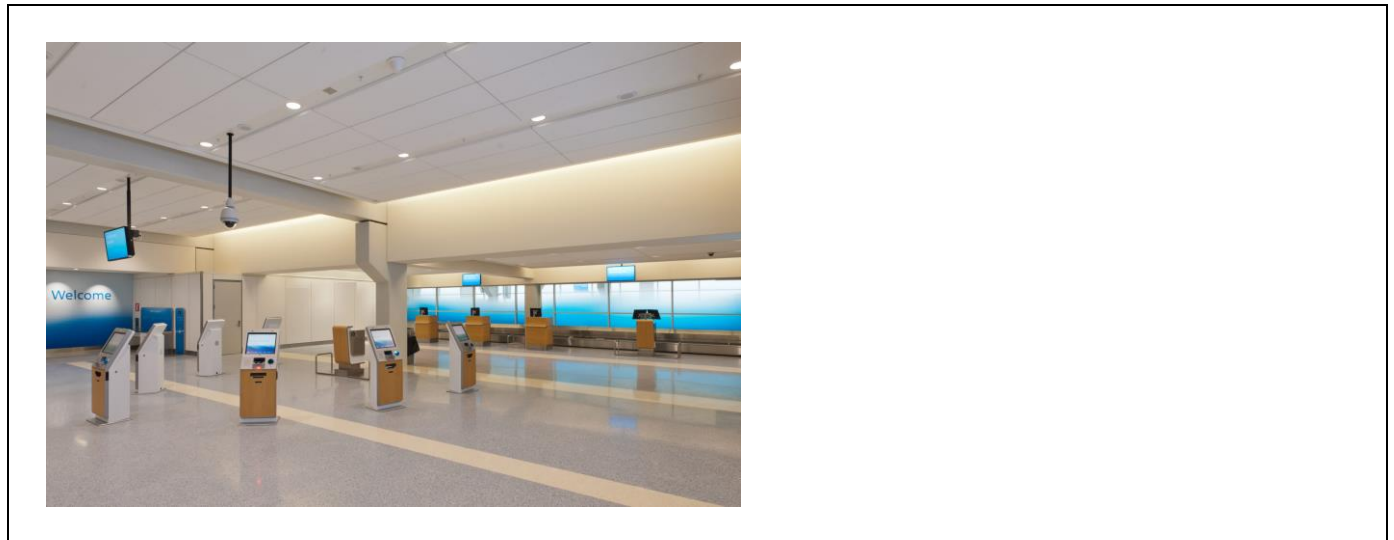
34 Mary Parade | Rydalmere NSW 2116 | Australia | T +61 2 9638 3333 | [www.actwelllighting.com](http://www.actwelllighting.com)

## TECHNICAL INFORMATION

### Photometrics:

	<table border="1"> <thead> <tr> <th>h(m)</th> <th>d(cm)</th> <th>Em</th> <th>Emax</th> </tr> </thead> <tbody> <tr><td>1.00</td><td>35.36</td><td>20666</td><td>31300</td></tr> <tr><td>2.00</td><td>70.72</td><td>5176</td><td>7825</td></tr> <tr><td>3.00</td><td>106.08</td><td>2296</td><td>3478</td></tr> <tr><td>4.00</td><td>141.44</td><td>1292</td><td>1956</td></tr> <tr><td>5.00</td><td>176.80</td><td>826.7</td><td>1252</td></tr> </tbody> </table>	h(m)	d(cm)	Em	Emax	1.00	35.36	20666	31300	2.00	70.72	5176	7825	3.00	106.08	2296	3478	4.00	141.44	1292	1956	5.00	176.80	826.7	1252
h(m)	d(cm)	Em	Emax																						
1.00	35.36	20666	31300																						
2.00	70.72	5176	7825																						
3.00	106.08	2296	3478																						
4.00	141.44	1292	1956																						
5.00	176.80	826.7	1252																						
	<table border="1"> <thead> <tr> <th>h(m)</th> <th>d(cm)</th> <th>Em</th> <th>Emax</th> </tr> </thead> <tbody> <tr><td>1.00</td><td>48.39</td><td>13672</td><td>21516</td></tr> <tr><td>2.00</td><td>96.79</td><td>3418</td><td>5379</td></tr> <tr><td>3.00</td><td>145.18</td><td>1519</td><td>2391</td></tr> <tr><td>4.00</td><td>193.57</td><td>854.5</td><td>1345</td></tr> <tr><td>5.00</td><td>241.96</td><td>546.9</td><td>860.6</td></tr> </tbody> </table>	h(m)	d(cm)	Em	Emax	1.00	48.39	13672	21516	2.00	96.79	3418	5379	3.00	145.18	1519	2391	4.00	193.57	854.5	1345	5.00	241.96	546.9	860.6
h(m)	d(cm)	Em	Emax																						
1.00	48.39	13672	21516																						
2.00	96.79	3418	5379																						
3.00	145.18	1519	2391																						
4.00	193.57	854.5	1345																						
5.00	241.96	546.9	860.6																						
	<table border="1"> <thead> <tr> <th>h(m)</th> <th>d(cm)</th> <th>Em</th> <th>Emax</th> </tr> </thead> <tbody> <tr><td>1.00</td><td>86.34</td><td>7300</td><td>11658</td></tr> <tr><td>2.00</td><td>172.67</td><td>1825</td><td>2914</td></tr> <tr><td>3.00</td><td>259.01</td><td>811.1</td><td>1295</td></tr> <tr><td>4.00</td><td>345.35</td><td>456.3</td><td>728.6</td></tr> <tr><td>5.00</td><td>431.69</td><td>292.0</td><td>466.3</td></tr> </tbody> </table>	h(m)	d(cm)	Em	Emax	1.00	86.34	7300	11658	2.00	172.67	1825	2914	3.00	259.01	811.1	1295	4.00	345.35	456.3	728.6	5.00	431.69	292.0	466.3
h(m)	d(cm)	Em	Emax																						
1.00	86.34	7300	11658																						
2.00	172.67	1825	2914																						
3.00	259.01	811.1	1295																						
4.00	345.35	456.3	728.6																						
5.00	431.69	292.0	466.3																						

### Product Application Photo:



We reserve the right to make technical changes.

Should you have any enquiries, please consult an Actwell representative. Email: [sales@actwelllighting.com.au](mailto:sales@actwelllighting.com.au)

34 Mary Parade | Rydalmere NSW 2116 | Australia | T +61 2 9638 3333 | [www.actwelllighting.com](http://www.actwelllighting.com)